

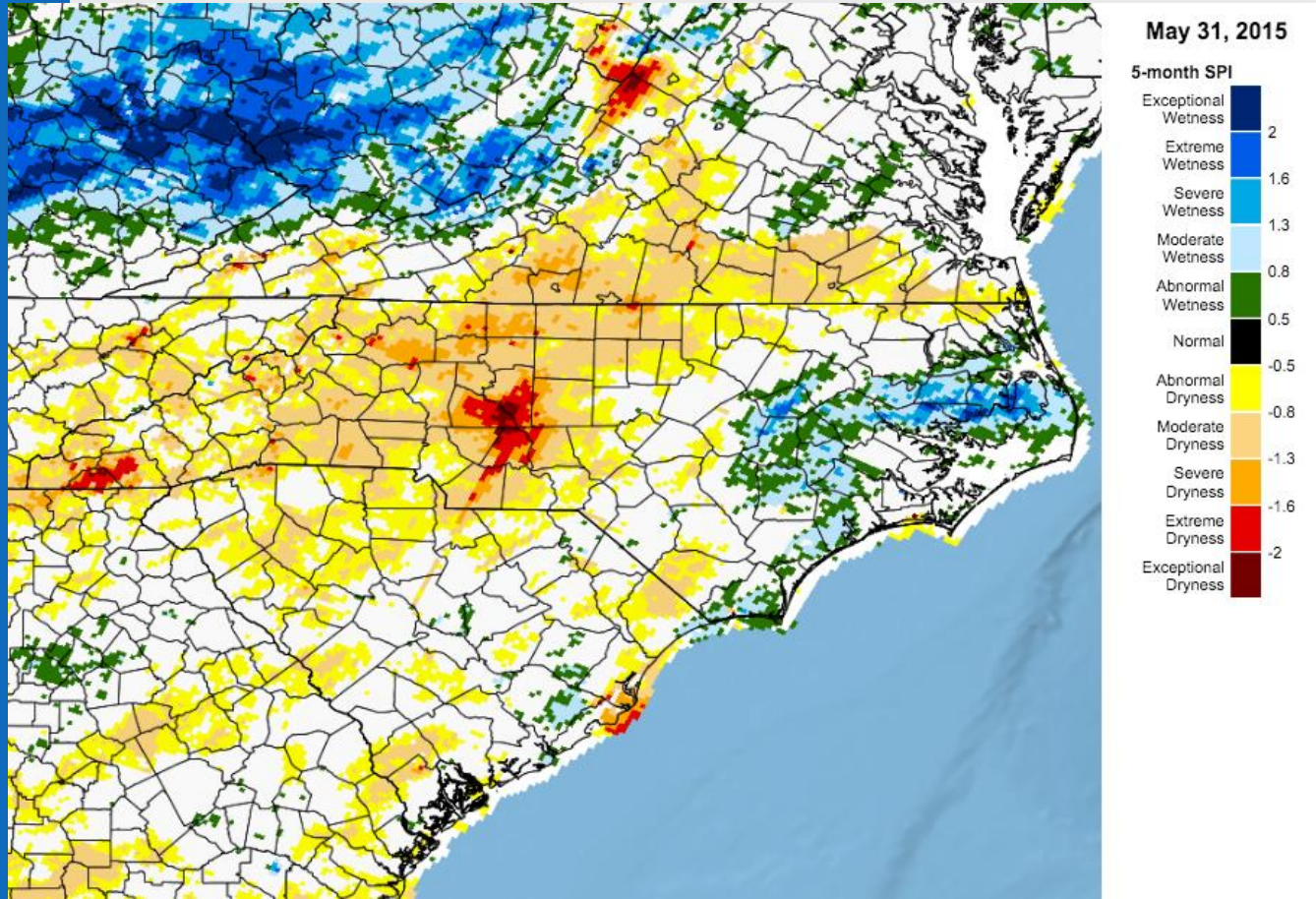
Climate Overview

Rebecca Ward

State Climate Office of North Carolina

Annual DMAC Meeting, April 28, 2016

Pattern Emerged: "Dry in the west, Wet in the east"



Spring 2015

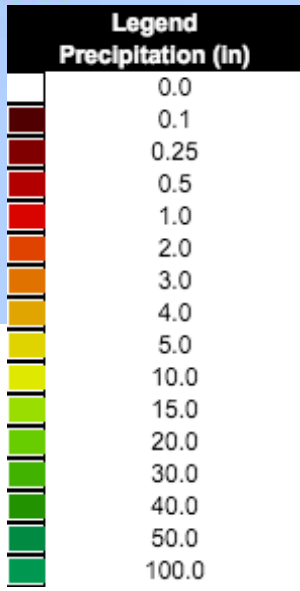
18th Warmest

37th Driest

May 2015 Total Precipitation



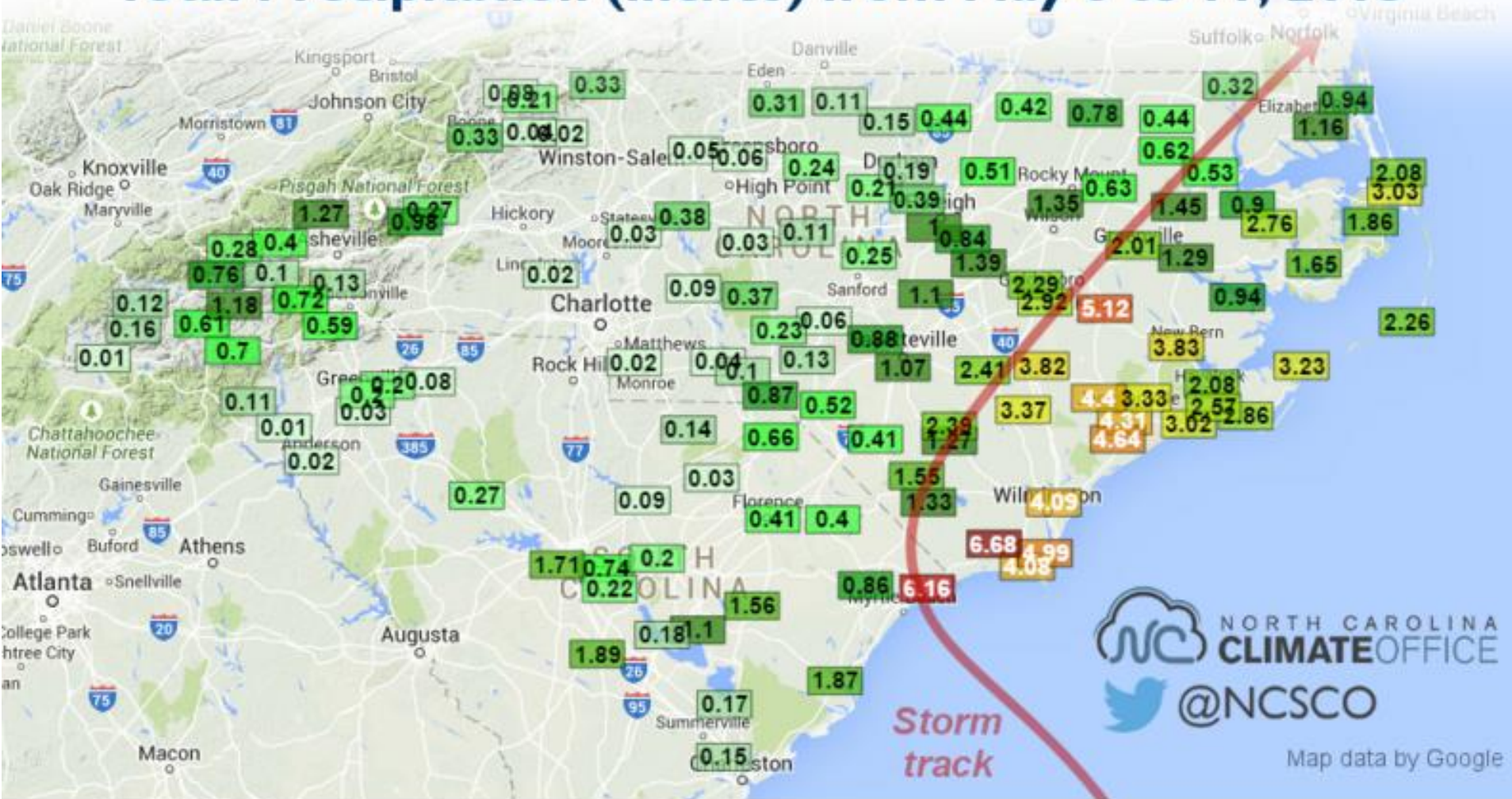
Fell on May 26th



Source: SERCC Climate Perspectives Tool
<http://www.sercc.com/climper/>

Noteworthy Events: Tropical Storm Ana

Total Precipitation (inches) from May 8 to 11, 2015



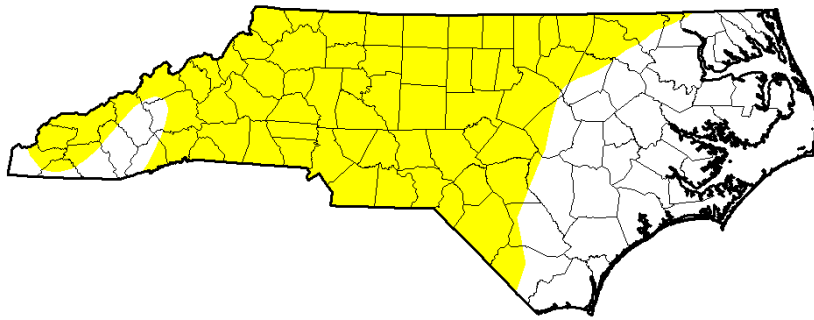
Precipitation totals, in inches, from May 8 through 11 in North and South Carolina.

Summer 2015

7th Warmest - 37th Driest

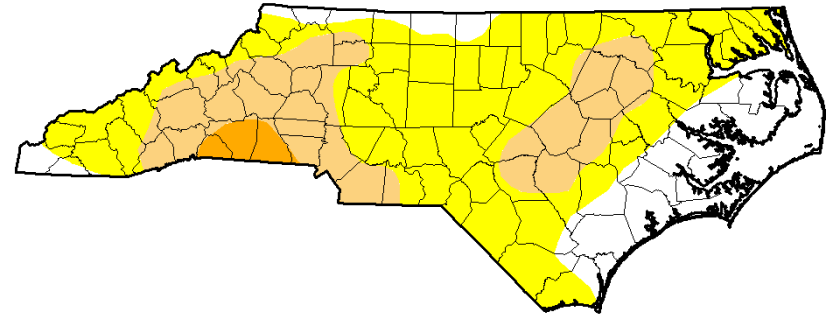
U.S. Drought Monitor North Carolina

June 2, 2015
(Released Thursday, Jun. 4, 2015)
Valid 7 a.m. EST



U.S. Drought Monitor North Carolina

August 25, 2015
(Released Thursday, Aug. 27, 2015)
Valid 8 a.m. EDT



Intensity

- D0 Abnormally Dry
- D1 Moderate Drought
- D2 Severe Drought
- D3 Extreme Drought
- D4 Exceptional Drought

The Drought Monitor focuses on broad-scale conditions. Local conditions may vary. See accompanying text summary for forecast statements.

Author:
David Miskus
NOAA/NWS/NCEP/CPC



Intensity

- D0 Abnormally Dry
- D1 Moderate Drought
- D2 Severe Drought
- D3 Extreme Drought
- D4 Exceptional Drought

The Drought Monitor focuses on broad-scale conditions. Local conditions may vary. See accompanying text summary for forecast statements.

Author:
Anthony Artusa
NOAA/NWS/NCEP/CPC



Culprit for summertime heat: mid-level ridging

Rankings Source: NCEI State of the Climate August 2015
<https://www.ncdc.noaa.gov/sotc/national/201505>

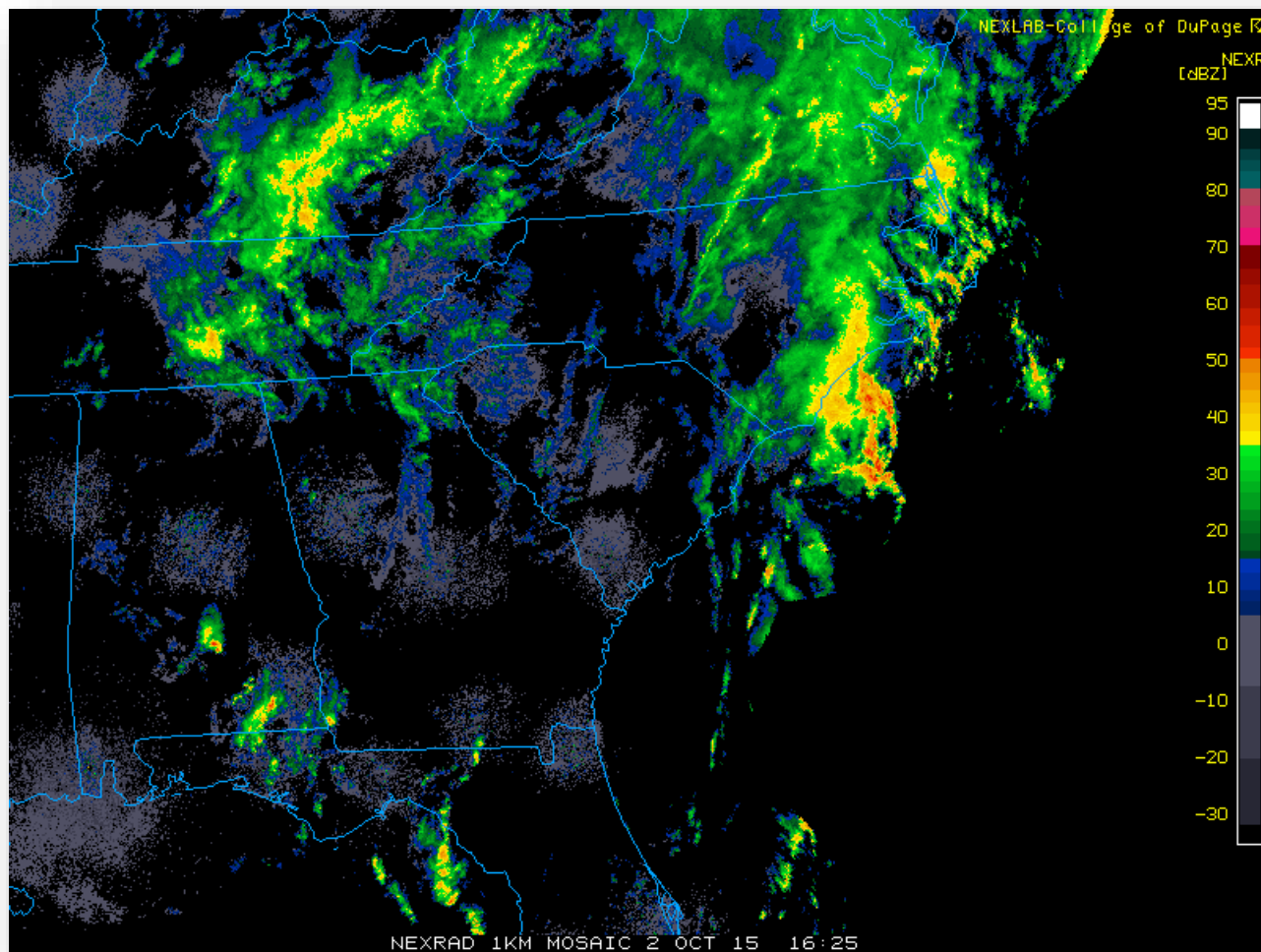
September saw continuation of dryness...until the last week

- Effectively a "drought busting" event

Fall 2015

2nd Wettest

9th Warmest

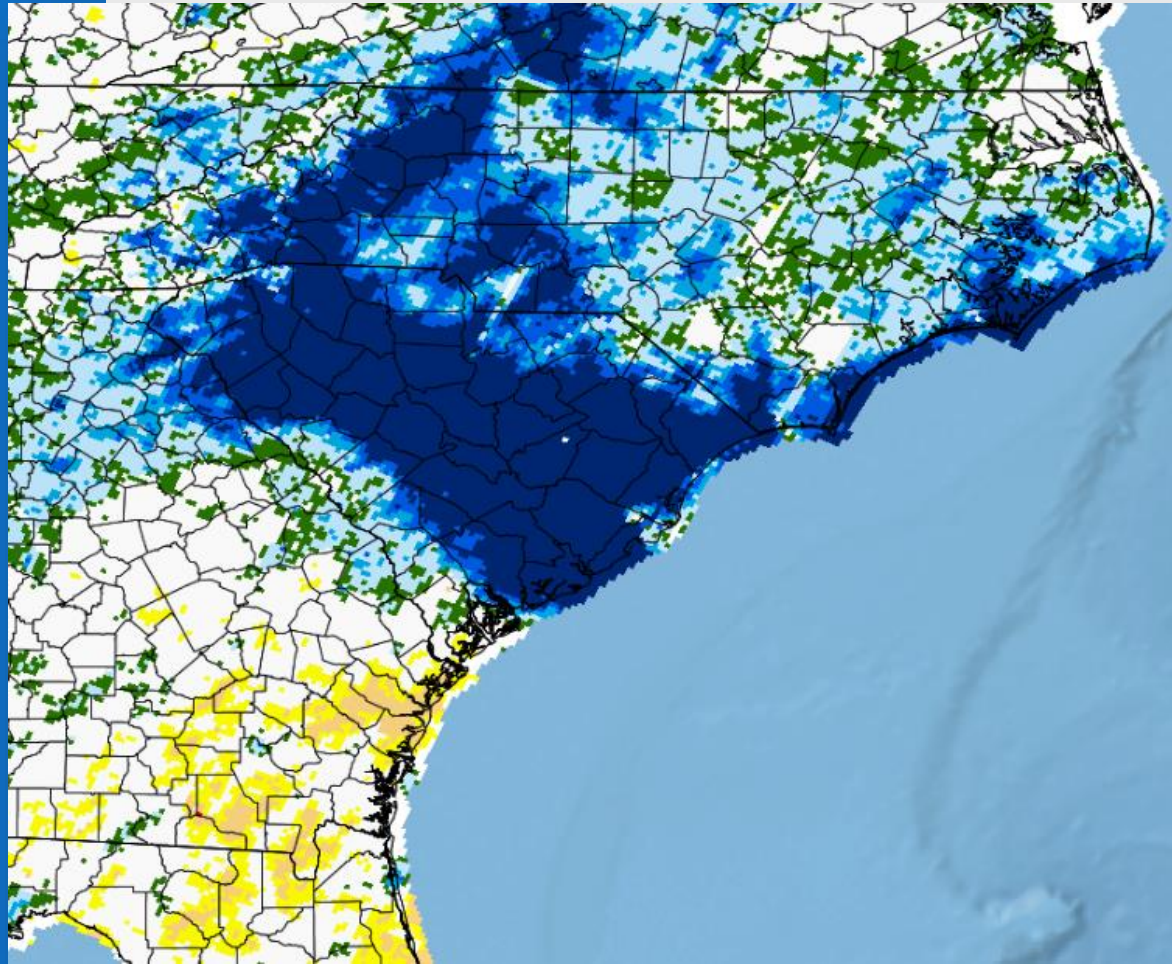


Rankings Source: NCEI State of the Climate November 2015
<https://www.ncdc.noaa.gov/sotc/national/201511>

Fall 2015

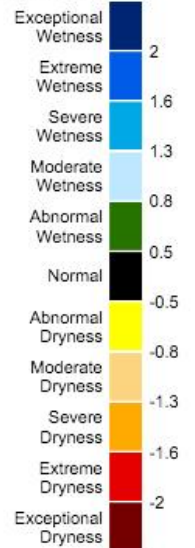
2nd Wettest

9th Warmest



Nov 30, 2015

90-day SPI



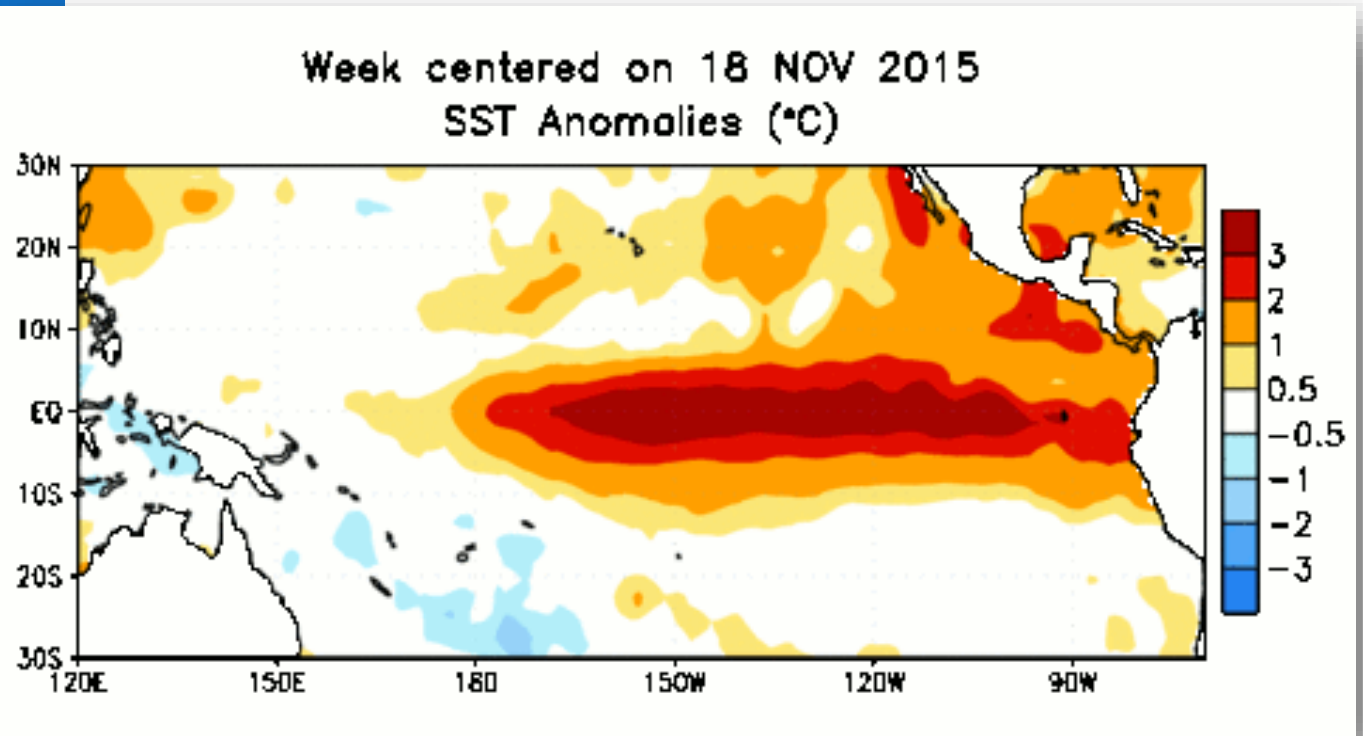
Rankings Source: NCEI State of the Climate November 2015 <https://www.ncdc.noaa.gov/sotc/national/201511>;
Map Source: Integrated Water Portal <http://climate.ncsu.edu/water/map>

Winter 2015-2016

6th Warmest

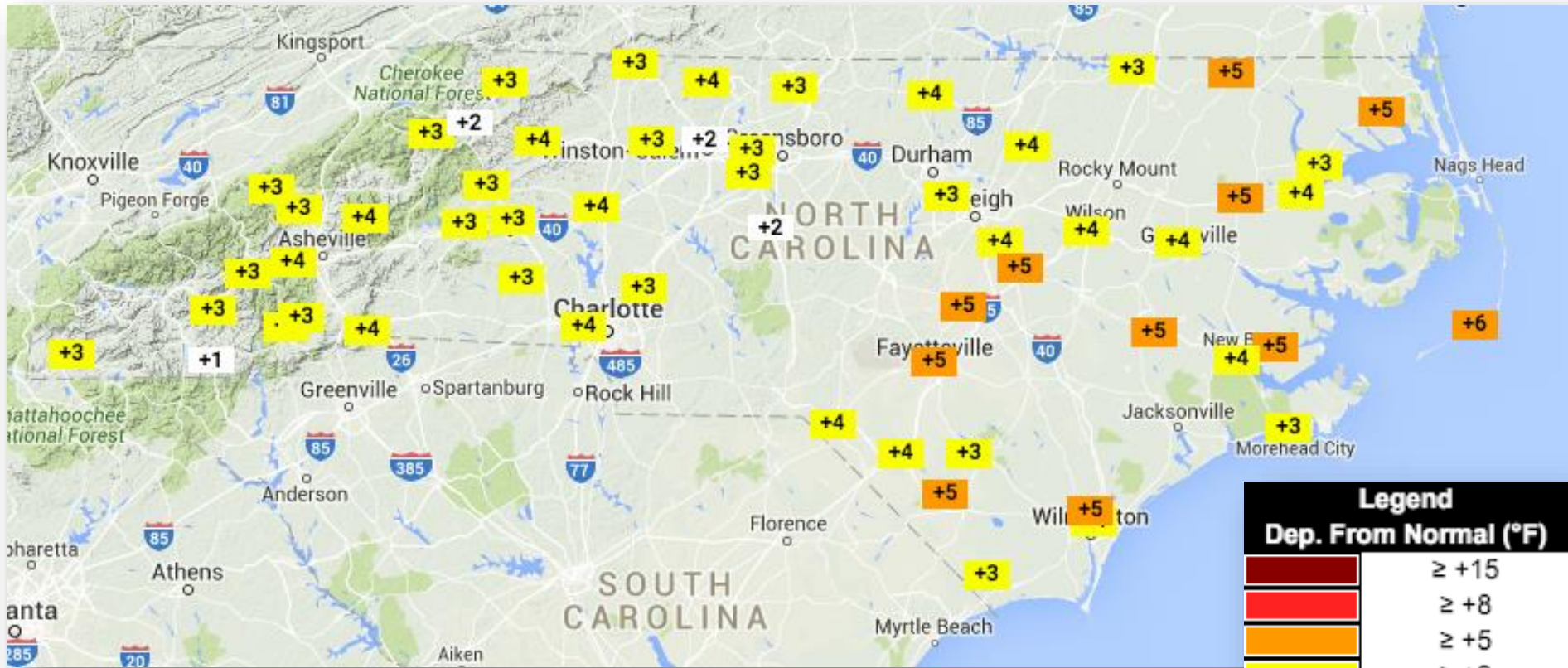
4th Wettest

- Warm, wet winter
- Dominated by the effects of an El Nino in the Pacific
 - Moisture-laden storms tracked over Southeast
 - No big snow events



Winter 2015-2016

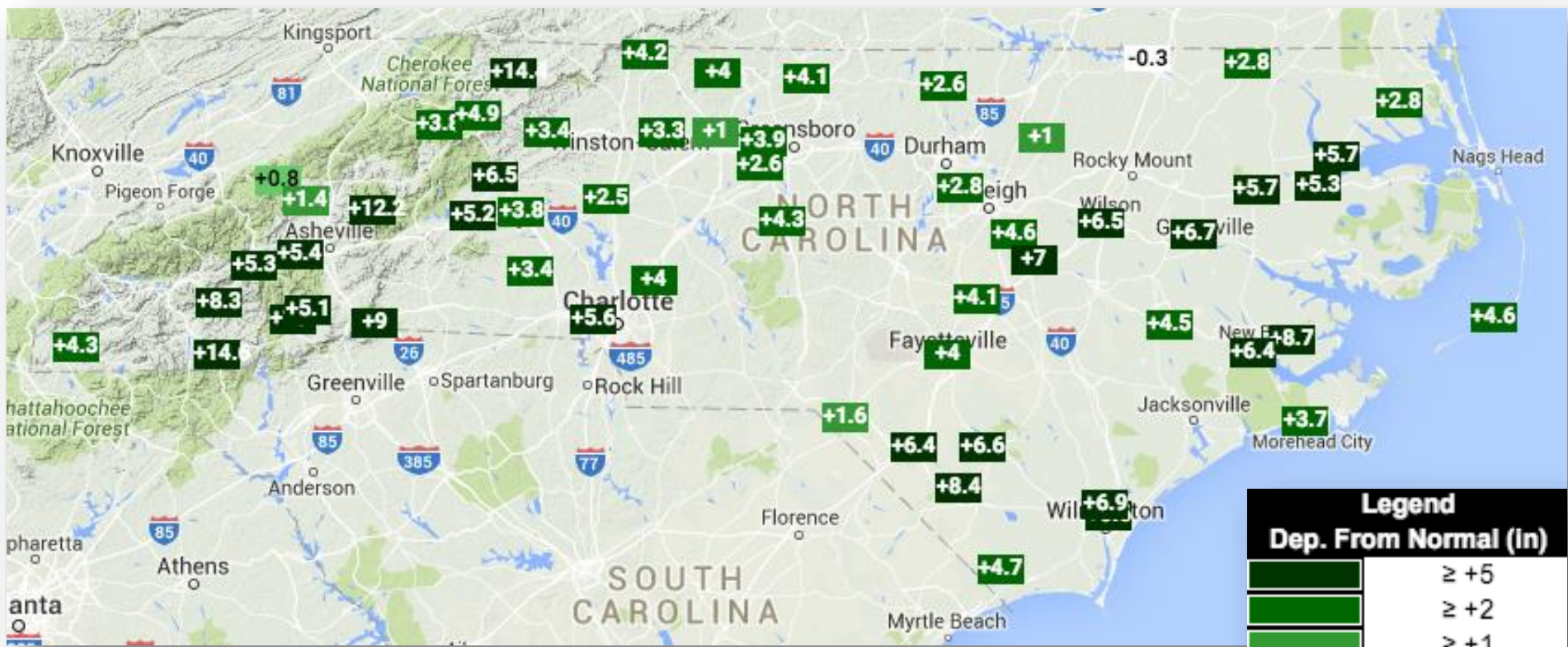
Mean Temperature Departures from Normal



Source: SERCC Climate Perspectives Tool
<http://www.sercc.com/climper/>

Winter 2015-2016

Total Precipitation Departure from Normal



Legend	
Dep. From Normal (In)	
[Dark Green Box]	≥ +5
[Medium Green Box]	≥ +2
[Light Green Box]	≥ +1
[Lightest Green Box]	≥ +0.25
[White Box]	-
[Light Brown Box]	≤ -0.25
[Medium Brown Box]	≤ -1
[Dark Brown Box]	≤ -2
[Darkest Brown Box]	≤ -5

Source: SERCC Climate Perspectives Tool
<http://www.sercc.com/climper/>

Spring 2016

Off to a dry, warm start

Season-to-Date Departure From Normal Precipitation, April 26, 2016

